

Product Specifications



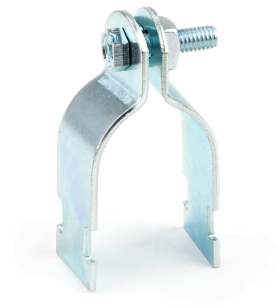
1/2" Universal Strut Clamp

Part Number SC50U

Category Number 5391

UPC 781002817079

Universal Strut Clamps are used to secure EMT or rigid conduit to strut channel in overhead or wall mount applications. They come preassembled with a keps nut and are electrogalvanized for superior corrosion resistance.



Physical Characteristics

Type	Strut Clamp
Style	Universal
EMT Size (in)	1/2"
Pipe Size (in)	1/2"
Bolt Size	1/4"-20 x 1"
Size	1/2"
Connection	Clamp On
Material	Carbon Steel
Finish	Electrogalvanized
Gauge	16

Performance Data

Maximum Load (lb)	400 lbs
Applications	Secures EMT or Rigid Conduit to Strut Channel
Special Features	Designed For EMT/Pipe, Suitable For Use With 12 or 14 Gauge Metal Framing Channel
For Use With	Rigid/EMT Conduit

Packaging Details

Standard Qty	50
Master Qty	50
Price Per	100
Package Length	8.20
Package Width	5.30
Package Height	5.70
Net Weight	0.121
Package Weight	6.05

Certifications

RoHS Compliant	No
----------------	----